

JEWELLERY TRAINING SOLUTIONS PLATINUM LEVEL LESSON PLANNER



Claw Setting Curriculum

Preparation for claw setting 0/3 ^

Introduction to stone setting VIDEO - 6 MIN

Claw setting techniques PDF

Claw setting tools PDF

Four Claw Setting 0/3 ^

Four Claw setting (first lesson) VIDEO - 24 MIN

Four Claw Setting (subtitled) VIDEO - 10 MIN

Claw setting with a setting bur VIDEO - 9 MIN

Six Claw Setting 0/2 ^

Six Claw Setting (subtitled) VIDEO - 9 MIN

Six claw setting VIDEO - 26 MIN

Claw Setting Square Stones 0/2 ^

Claw setting square stones VIDEO - 26 MIN

Claw setting square stones (subtitled) VIDEO - 12 MIN

Claw setting a cabochon stone 0/1 ^

Claw setting a cabochon stone VIDEO - 23 MIN

Claw setting commission rings 0/3 ^

Solitaire ring VIDEO - 18 MIN

Claw setting a three stone ring VIDEO - 25 MIN

Claw setting a pear shaped stone VIDEO - 12 MIN

Claw setting tips 0/4 ^

Tool tips VIDEO - 13 MIN

Claw tip shaper VIDEO - 16 MIN

Claw setting problems & contingencies VIDEO - 7 MIN

Comparing CZ with Diamond VIDEO - 2 MIN



Bezel Setting Curriculum

Round Bezel Setting VIDEO - 26 MIN

Round Bezel Setting (subtitled) VIDEO - 12 MIN

Burnished bezel setting VIDEO - 10 MIN

Bezel setting information handout PDF

Bezel Setting Square Stones 0/5 ^

Square stone setting handout PDF

Bezel Setting Square Stones VIDEO - 32 MIN

Square Bezel Setting (subtitled) VIDEO - 14 MIN

Castle setting VIDEO - 43 MIN

Castle setting (Subtitled) VIDEO - 17 MIN

Decorative bezel setting 0/2 ^

Beaded Bezel Setting VIDEO - 12 MIN

Antique look bezel setting VIDEO - 18 MIN

Bezel setting shaped stones 0/5 ^

Bezel setting cabochon stone VIDEO - 12 MIN

Pear shape VIDEO - 20 MIN

Marquise shape VIDEO - 24 MIN

Trillion shape VIDEO - 26 MIN

Oval shape VIDEO - 8 MIN

Bezel setting commission work 0/3 ^

White gold cluster VIDEO - 29 MIN

Small square stones VIDEO - 23 MIN

Princess cut diamond VIDEO - 26 MIN

Thick bezel setting 0/2 ^

Thick bezel setting V1 VIDEO - 15 MIN

Thick bezel setting V2 VIDEO - 18 MIN

Tool Tips 0/5 ^

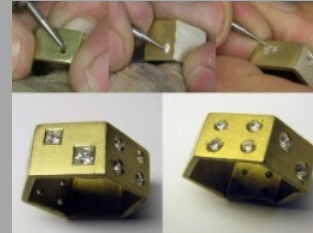
Tool Tips VIDEO - 13 MIN

Setting roller VIDEO - 11 MIN

Pushers & shapers VIDEO - 8 MIN

Hammer tools VIDEO - 22 MIN

Preparing a flat graver VIDEO - 32 MIN



Gypsy Setting Curriculum

Gypsy Setting Round Stones 0/8 ^

Gypsy setting tool tips VIDEO - 19 MIN

Gypsy Setting V1 VIDEO - 16 MIN

Gypsy Setting V2 VIDEO - 6 MIN

Gypsy Setting V3 VIDEO - 9 MIN

Gypsy Setting V4 VIDEO - 6 MIN

Gypsy Setting V5 VIDEO - 20 MIN

Making a setting plate for gypsy setting VIDEO - 33 MIN

Gypsy setting information sheet PDF

Gypsy Setting Square Stones 0/2 ^

Gypsy setting square stones VIDEO - 28 MIN

Gypsy Setting Square Stones (subtitled) VIDEO - 22 MIN

Various gypsy setting techniques 0/3 ^

Gypsy setting a wedding band VIDEO - 39 MIN

Bezel setting using gypsy technique VIDEO - 10 MIN

Gypsy setting a rope design VIDEO - 21 MIN

Gypsy setting shaped stones 0/3 ^

Pear shaped stone VIDEO - 9 MIN

Marquise stone VIDEO - 15 MIN

Tapered baguette VIDEO - 18 MIN

Gypsy Setting Tool Tips 0/3 ^

Gypsy setting tools PDF

Gypsy setting tools VIDEO - 19 MIN

Hammer setting tool tips VIDEO - 22 MIN



Split Claw Setting Curriculum

Split claw setting 0/4 ^

Split claw setting (Part one) VIDEO - 37 MIN

Split claw setting (Part two) VIDEO - 26 MIN

Split claw setting handout PDF

Tool list PDF

Split claw setting (subtitled) 0/1 ^

Split Claw Setting (Subtitled) VIDEO - 21 MIN

Split claw setting V2 0/1 ^

Split claw setting V2 VIDEO - 43 MIN

Split claw setting (Narrow band) 0/2 ^

Split claw setting (narrow band) VIDEO - 44 MIN

Split claw setting (narrow setting part 2) VIDEO - 30 MIN

Split claw setting larger stones 0/1 ^

Split claw setting larger stones VIDEO - 32 MIN

V cut eternity setting 0/1 ^

V Cut eternity setting VIDEO - 45 MIN

Fishtail setting 0/1 ^

Fishtail setting VIDEO - 49 MIN

Setting tool tips 0/3 ^

Claw splitter VIDEO - 9 MIN

Preparing a flat graver VIDEO - 32 MIN

Pushers & shapers VIDEO - 8 MIN

JEWELLERY TRAINING SOLUTIONS PLATINUM LEVEL LESSON PLANNER



Shared Claw Setting Curriculum

Shared claw setting 0/3 ^

- Shared claw setting (Part one) VIDEO - 38 MIN
- Shared claw setting (Part two) VIDEO - 28 MIN
- Shared claw setting handout PDF
- Shared claw setting (subtitled) 0/1 ^
- Shared claw setting VIDEO - 21 MIN
- Shared claw setting with shaped sides 0/1 ^
- Shared claw setting with shaped sides VIDEO - 51 MIN
- Drape setting 0/1 ^
- Drape setting VIDEO - 32 MIN
- Shared claw setting on wedding band 0/1 ^
- Shared claw setting on wedding band VIDEO - 41 MIN
- Setting tool tips 0/5 ^
- Brass pushers & shapers VIDEO - 8 MIN
- Making an enlarged beader VIDEO - 5 MIN
- Preparing a flat graver VIDEO - 32 MIN
- Preparing a graver PDF
- Tool tips VIDEO - 13 MIN



Channel Setting Curriculum

Channel setting round stones 0/4 ^

- Channel setting round stones (Part one) VIDEO - 49 MIN
- Channel setting round stones (Part two) VIDEO - 40 MIN
- Channel Setting Round Stones (Subtitled) VIDEO - 26 MIN
- Channel Setting (Spaced out) VIDEO - 28 MIN
- Channel setting square stones 0/4 ^
- Channel setting square stones (Part one) VIDEO - 36 MIN
- Channel setting square stones (Part two) VIDEO - 28 MIN
- Channel setting square stones (Subtitled) VIDEO - 15 MIN
- Channel setting square stones V2 VIDEO - 42 MIN
- Channel setting commission work 0/3 ^
- Channel setting a shaped wedding ring VIDEO - 23 MIN
- Channel Setting Large Stones VIDEO - 29 MIN
- Channel setting combination ring VIDEO - 20 MIN
- Tool Tips 0/3 ^
- Channel setting bur VIDEO - 6 MIN
- Hammer setting tool tips VIDEO - 22 MIN
- Preparing a flat graver VIDEO - 32 MIN
- Channel setting information handouts 0/2 ^
- Channel setting techniques PDF
- Channel setting tools PDF



Star & Bright Cutting Curriculum

Star Setting 0/5 ^

- Four point star setting VIDEO - 19 MIN
- Star setting (3mm stone) VIDEO - 24 MIN
- Star setting (2.5mm stone) VIDEO - 15 MIN
- Star Setting (subtitled) VIDEO - 20 MIN
- Four point marking template VIDEO - 13 MIN
- Framed Grain Setting 0/5 ^
- Boxed setting (2.5mm stone) VIDEO - 13 MIN
- Boxed setting (3mm stone) VIDEO - 18 MIN
- Boxed Setting (subtitled) VIDEO - 23 MIN
- Boxed set row VIDEO - 18 MIN
- Grain set triangle VIDEO - 26 MIN
- Decorative bright cutting 0/4 ^
- Boxed grain setting VIDEO - 41 MIN
- Boxed grain setting (part two) VIDEO - 19 MIN
- Leaf shape grain setting VIDEO - 21 MIN
- Rope grain setting VIDEO - 47 MIN
- Illusion setting 0/1 ^
- Illusion setting VIDEO - 24 MIN
- Graver Tool Tips 0/8 ^
- Graver information PDF
- Preparing a square graver VIDEO - 19 MIN
- Preparing a flat graver VIDEO - 17 MIN
- Graver Exercise VIDEO - 20 MIN
- Graver handle VIDEO - 8 MIN
- Graver maintenance VIDEO - 22 MIN
- Graver tool tips VIDEO - 18 MIN
- Beader tool tips VIDEO - 10 MIN
- Star Setting Information 0/1 ^
- Star Setting Handout PDF



Grain Setting Curriculum

Grain Setting (pre-carved) 0/3 ^

- Grain Setting VIDEO - 54 MIN
- Grain Setting (subtitled) VIDEO - 30 MIN
- Grain setting handout PDF
- Grain setting (lifted grain) 0/2 ^
- Lifted grain setting (shared claw) VIDEO - 23 MIN
- Lifted grain setting (split claw) VIDEO - 18 MIN
- Hour glass grain setting 0/1 ^
- Hour glass setting VIDEO - 62 MIN
- Grain setting commission work 0/3 ^
- Grain setting a platinum ring VIDEO - 29 MIN
- Grain set nine stone ring VIDEO - 33 MIN
- Grain setting square cluster VIDEO - 40 MIN
- Grain setting preparation and handouts 0/7 ^
- Grain setting techniques handout PDF
- Recommended tools for grain setting PDF
- Preparing a square graver VIDEO - 19 MIN
- Preparation a flat graver VIDEO - 32 MIN
- Graver information PDF
- Graver maintenance VIDEO - 22 MIN
- Graver exercise VIDEO - 20 MIN

JEWELLERY TRAINING SOLUTIONS PLATINUM LEVEL LESSON PLANNER



Pave Setting Curriculum

- ☐ Pave setting (pre-carved beads) 0/3 ^
- ☒ Pave setting
 - ☒ VIDEO - 47 MIN
- ☐ Pave set out
 - ☒ TEXT
- ☐ Pave setting tutorial
 - ☒ PDF
- ☐ Pave setting square pattern 0/1 ^
- ☒ Pave setting square pattern
 - ☒ VIDEO - 43 MIN
- ☐ Pave setting (shattered glass technique) 0/1 ^
- ☐ Pave setting V2
- ☐ Pave setting (beading technique) 0/1 ^
- ☐ Pave setting V3
 - ☒ VIDEO - 40 MIN
- ☐ Bonus Lesson CAD/CAM setting 0/1 ^
- ☐ CAD/CAM setting
 - ☒ VIDEO - 46 MIN
- ☐ Graver preparation 0/3 ^
- ☐ Graver preparation
 - ☒ VIDEO - 17 MIN
- ☐ Graver maintenance
 - ☒ VIDEO - 22 MIN
- ☐ Preparing a graver
 - ☒ PDF



Micro-Pave Setting Curriculum

- ☐ Micro pave setting (Two row) 0/1 ^
- ☒ Micro pave (two row)
 - ☒ VIDEO - 46 MIN
- ☐ Micro pave (Three row) 0/2 ^
- ☐ Micro pave (three row)
 - ☒ VIDEO - 44 MIN
- ☐ Micro pave (three row) lay out worksheet
 - ☒ PDF
- ☐ Micro pave (Four row) 0/2 ^
- ☐ Micro pave (four row)
 - ☒ VIDEO - 43 MIN
- ☐ Micro pave (four row) lay out worksheet
 - ☒ PDF
- ☐ Tool tips 0/3 ^
- ☐ Beading tool
 - ☒ VIDEO - 10 MIN
- ☐ Enlarged beader
 - ☒ VIDEO - 5 MIN
- ☐ Drilling practice
 - ☒ VIDEO - 25 MIN



Claw Setting Shaped Stones Curriculum

- ☐ Claw setting shaped stones 0/5 ^
- ☒ Marquise shaped claw setting
 - ☒ VIDEO - 28 MIN
- ☐ Pear shape claw setting
 - ☒ VIDEO - 17 MIN
- ☐ Emerald cut claw setting
 - ☒ VIDEO - 18 MIN
- ☐ Square shape claw setting
 - ☒ VIDEO - 25 MIN
- ☐ Recommended setting tools
 - ☒ PDF
- ☐ Setting tools information 0/5 ^
- ☐ Making a pusher & shaper
 - ☒ VIDEO - 8 MIN
- ☐ Making and enlarged beader
 - ☒ VIDEO - 5 MIN
- ☐ Hammer tool information
 - ☒ VIDEO - 22 MIN
- ☐ Preparing a graver
 - ☒ VIDEO - 32 MIN
- ☐ Preparing a graver
 - ☒ PDF



Bezel Setting Shapes Stones Curriculum

- ☐ Bezel setting shaped stones 0/5 ^
- ☒ Oval cut stone
 - ☒ VIDEO - 47 MIN
- ☐ Emerald cut stone
 - ☒ VIDEO - 36 MIN
- ☐ Pear shaped cut
 - ☒ VIDEO - 32 MIN
- ☐ Marquise cut
 - ☒ VIDEO - 29 MIN
- ☐ Setting tools
 - ☒ PDF
- ☐ Tool Preparation 0/4 ^
- ☐ Hammer tools
 - ☒ VIDEO - 22 MIN
- ☐ Flat graver preparation
 - ☒ VIDEO - 17 MIN
- ☐ Preparing a graver information
 - ☒ PDF
- ☐ Shaper & pusher
 - ☒ VIDEO - 8 MIN

The JTS Ten Stage stone setting program is structured in a way to help you advance your setting skills methodically. Each stage underpins the following stage to ensure that your learning experience is achievable and will help you to reach your full potential.

This complete course is included with the annual Full JTS Membership and the monthly Platinum Level Subscription.

For other purchase options go to; <https://www.jewellerytrainingsolutions.com.au/collections/stone-setting>

Quick search your next lesson by typing the course name into the website search bar.